






Wound Healing Optimisation with Advancis Medical

| | Wound Bed Preparation | | | Wound Healing | |
|--------------------|---|--|--|--|--|
| | Infection | Necrosis | Slough | Granulating | Epithelialising |
| Aim |  Prevent & manage infection |  Remove necrotic tissue |  Remove slough Manage exudate |  Manage exudate Protect |  Protect |
| Primary Dressing | Activon Manuka honey | Activon Manuka honey | Activon Manuka honey | Eclipse Advazorb Silflex | Advazorb Silflex |
| Secondary Dressing | Eclipse Advazorb | Eclipse Advazorb | Eclipse Advazorb | Eclipse Advazorb | Advazorb |



Silflex

Soft Silicone Wound Contact Layer
With **Silfix** Technology

Contents

Silflex
Soft Silicone Wound Contact Layer

SILFIX TECHNOLOGY

TREAT WITH CONFIDENCE

COST EFFECTIVENESS

CLINICAL CASES

PRODUCT RANGE

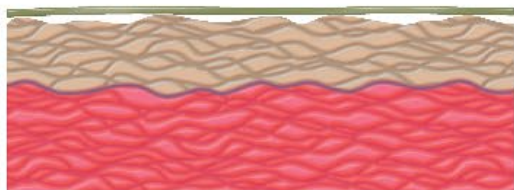
ORDERING INFORMATION

REFERENCES

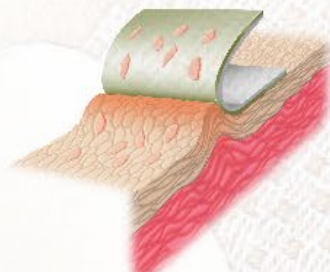
Silfix Technology



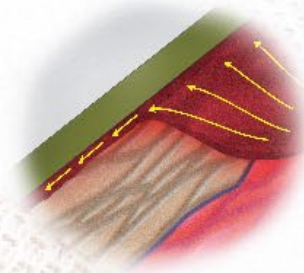
Traditional adhesive dressings may delay healing and cause unnecessary pain



Inflexible, sticking strongly to small areas

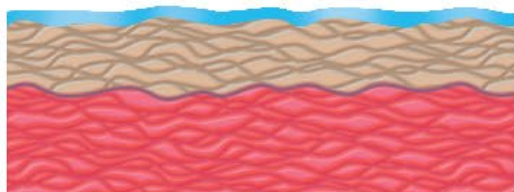


Easily damage or strip cells

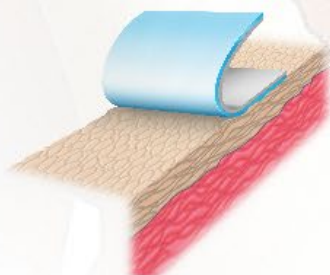


Do not form a seal, allowing exudate to leak

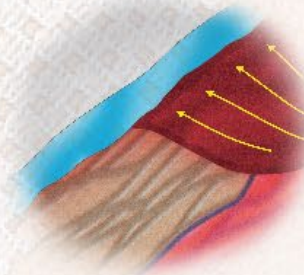
Silfix soft silicone dressings



Gently adhere across the skin's surface



No skin stripping or damage to healthy tissue



Seal the wound margins helping to prevent maceration

Treat with Confidence with Silflex

Silflex
Soft Silicone Wound Contact Layer



Atraumatic dressing changes
improve quality of life

i [FIND OUT MORE](#)



Unique sized holes for better
exudate management

i [FIND OUT MORE](#)



Superior handling

i [FIND OUT MORE](#)

Silflex is the most cost effective across the range

Silflex
Soft Silicone Wound Contact Layer



Effective use of Silflex on a skin tear

Silflex

Soft Silicone Wound Contact Layer



Patient

89 year old, frail lady
Dry, friable, paper-thin skin



Wound

Skin tear measuring 3 x 0.8cm.
No viable tissue to reapply.



Treatment Aim

Protect surrounding skin and
prevent further damage.



Treatment

Silflex soft silicone contact layer
covered with dressing pad and
secured with tubular bandage



Results

Week 1: Healthy granulation tissue
Week 2: Granulation and epithelialisation
Week 3: Fully healed



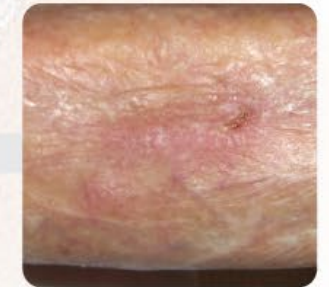
Day 1



Day 7



Day 14



Day 21

Using Silflex to protect a hypergranulated skin graft site

Silflex
Soft Silicone Wound Contact Layer



Patient

91 year old lady



Wound

Longstanding leg ulcer with failed skin graft. Hypergranulation



Treatment Aim

Prevention of damage to fragile tissue during daily treatment of hypergranulation



Treatment

Terricortril ointment covered with Silflex plus absorbent pad and tubular bandage

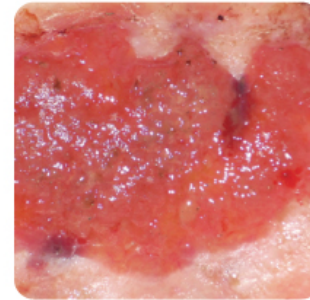


Results

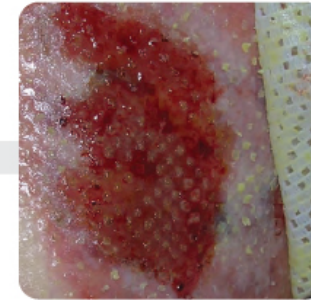
Day 3: Healthy periwound with no stripping or trauma

Day 8: Hypergranulation resolved and periwound intact.

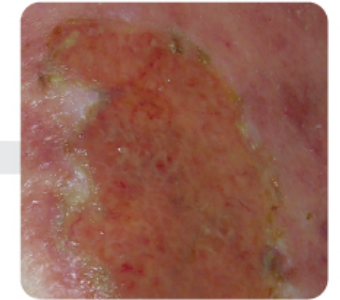
No pain at any dressing change



Day 1



Day 3



Day 8



Silflex

Soft Silicone Contact Layer



Other products in the Silfix soft silicone range

Siltape

Soft Silicone perforated tape

Advasil Conform

Silicone gel sheet for scar
management

Vellafilm

Semi-permeable adherent
silicone film dressing



Silflex

Soft Silicone Wound Contact Layer

Silflex

- Atraumatic wound contact layer made from polyester mesh coated with Silfix soft silicone.
- Apply to acute and chronic wounds that require protection.



123

CODES



Siltape

Siltape

Soft Silicone perforated tape

- A roll of soft silicone fixation tape (non-sterile)
- Easy tear perforations so no scissors are required
- Use instead of regular adhesive tape especially on sensitive skin
 - Hold dressings in place
 - Taping down eyelids during surgery
 - Securing IV lines
 - Over small incision sites
 - Under oxygen masks on bridges of noses
 - Securing fistula needles
 - Protection from pressure damage or sores from tubing
 - Protection from pressure damage caused by Personal Protective Equipment (PPE) such as face masks
- Ideal for paediatrics and neonates



123

CODES



Advasil Conform

Silicone gel sheet for scar management

Advasil Conform

- Silicone gel sheet to help improve the appearance of raised or discoloured scars and help prevent keloid scars
- Can be shaped to optimise coverage of scar area
- Reusable for up to 28 days
- Self-securing with gentle release
- Conformable
- Washable



123

CODES



Vellafilm

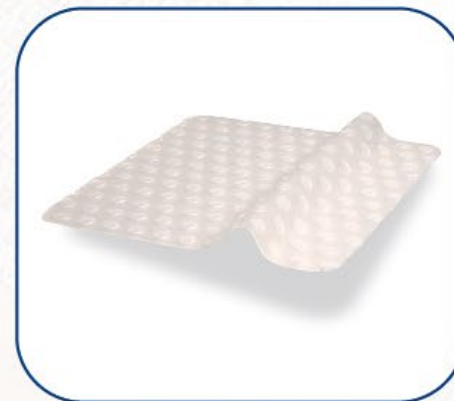
Semi-permeable adherent
silicone film dressing

Vellafilm

- Semi-permeable polyurethane film dressing with Silfix soft silicone adhesive.
- The wound site or primary dressing can be observed minimising dressing change frequency.
- For use on surgical wounds, superficial epithelializing wounds and for retention of primary dressings.

123

CODES



Ordering Information

Silflex

Soft Silicone Wound Contact Layer

| Product | Stock Code | Size | Pack Size |
|---|------------|-------------|-----------|
| Silflex Soft silicone wound contact layer | CR3922 | 5cm x 7cm | 10 |
| | CR3923 | 8cm x 10cm | 10 |
| | CR3924 | 12cm x 15cm | 10 |
| | CR3925 | 20cm x 30cm | 10 |
| | CR4006 | 35cm x 60cm | 5 |
| Advasil Conform Silicone gel sheet | CR3845 | 10cm x 10cm | 5 |
| | CR3832 | 10cm x 15cm | 5 |
| Vellafilm Semi-permeable adherent silicone film dressing | CR3919 | 12cm x 12cm | 10 |
| | CR3921 | 15cm x 20cm | 10 |
| | CR3917 | 12cm x 35cm | 10 |
| Siltape Soft silicone perforated tape roll | CR3938 | 2cm x 3m | 1 |
| | CR3939 | 4cm x 1.5m | 1 |



References

1. Edwards J, Mason S A. Developing a structured process for evaluating burn dressings. Poster presentation
2. Holden-Lund C (1987) Effects of relaxation with guided imagery on surgical stress and wound healing. Res Health Nurse 11(4): 235–44
3. World Union of Wound Healing Societies (2007) Wound Exudate and the Role of Dressings: A Consensus Document. Principles of best practice